

SABAL PALM SOUTH

SABAL PALMS CDD

CITY OF TAMARAC, BROWARD COUNTY, FLORIDA

LEGEND

	TYPE "C" INLET
	M.H.
	90° - 15" R.C.P.
	RIDGE LINE
	1% PAVEMENT SLOPE AND DIRECTION
	DIRECTION OF OVERLAND FLOW
	PROPOSED GRADE
	EXISTING GRADE
	F.F. = 12.00 FINISHED FLOOR ELEVATION
	CONCRETE SIDEWALK
	EXISTING UTILITIES OR UTILITIES BY OTHERS
	PROPOSED CONCRETE
	PROPOSED ASPHALT PAVEMENT
	POLLUTION RETARDANT BAFFLE
	BLUE REFLECTOR
	UTILITY EASEMENT
	D.W.E. DESIGN WATER ELEVATION
	EXISTING GATE VALVE AND FIRE HYDRANT
	DOUBLE WATER SERVICE
	SINGLE WATER SERVICE
	FIRE HYDRANT AND GATE VALVE
	BACTERIOLOGICAL SAMPLING POINT
	W.M. WATER MAIN
	G.V. GATE VALVE
	F.H. FIRE HYDRANT
	R.P.Z. REDUCED PRESSURE ZONE BACKFLOW PREVENTER
	SEWER MANHOLE STRUCTURE DESIGNATION
	R.E. RIM ELEVATION
	I.E. INVERT ELEVATION
	SINGLE SEWER SERVICE
	DIRECTION OF SANITARY SEWER FLOW
	R/W LINE
	PROPERTY LINE
	EXISTING ELEVATION
	EXISTING CONCRETE POWER POLE
	EXISTING WOOD POLE



PROJECT LOCATION

LOCATION MAP

SCALE: NTS

INDEX OF SHEETS:

DESCRIPTION:	SHEET NO.:
COVER SHEET	1
CDD MAINTENANCE	2-3



2737 Northeast 30th Place
Fort Lauderdale, Florida 33306
Phone: (954) 491-7811
Authorization No. EB-26343

"THE PROPOSED WORK HAS BEEN DESIGNED IN ACCORDANCE WITH ALL APPLICABLE FEDERAL, STATE, COUNTY, AND CITY OF TAMARAC CODES AND REGULATIONS HAVING JURISDICTION. IF ANY DISCREPANCIES EXIST BETWEEN THE PLANS/SPECIFICATION PREPARED BY THE DESIGNER AND THE CITY OF TAMARAC CODE AND/OR THE CITY OF TAMARAC STANDARD DETAILS, THE LATER SHALL GOVERN OR THE MOST STRINGENT."

ALL ROADS WITHIN THIS DEVELOPMENT ARE PRIVATE AND MAINTAINED BY THE HOME OWNERS ASSOCIATION



CDD MAINTENANCE PLAN

Engineer of Record S/N: 95 80 00 32 E4 4C 14 A6 37 99	CARLOS J. BALLBÉ	Project Number: 201526
Registered Engineer Number: State of Florida	Date: 03/21/2019 4181	Sheet Number: 1

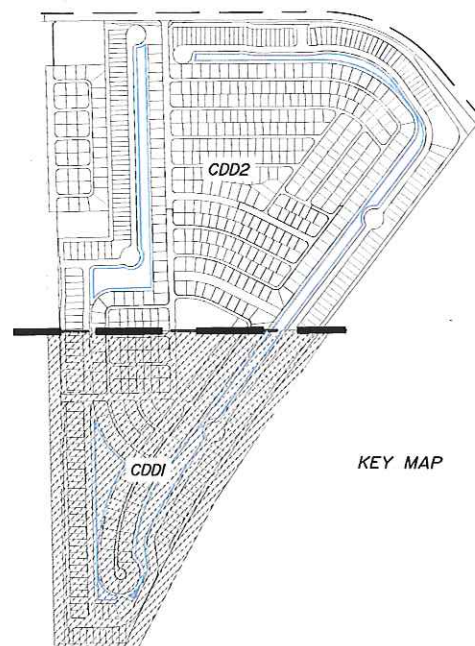
MATCHLINE REFER TO CDD(2)



0 100 200
Feet
1" = 100'

LEGEND:

- TRACT A & B
- TRACT B-1 THROUGH B-5, B-11, B-12 & B-14
- TRACT C-1 & C-2 CANAL
- TRACT C-1 & C-2 LANDSCAPE
- TRACT R-1, R-2 & R-3
- TRACT I, J, K, M, N, P, Q, S.



NO.	DATE	BY	REVISION	NO.	DATE	BY	REVISION

Designed by: N.G.T. Date: 02/2019
 Drawn by: N.G.T. Date: 02/2019
 Checked by: C.J.B. Date: _____

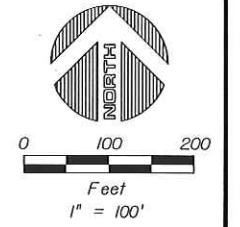
BALLBÉ & ASSOCIATES
 Civil Engineering • Planning • Surveying

2737 Northeast 30th Place
 Fort Lauderdale, Florida 33306
 Phone: (954) 491-7811
 Authorization No. EB-26343

Engineer of Record: CARLOS J. BALLBÉ
 Registered Engineer Number: _____ Date: 03/22/2019
 State of Florida: 4181

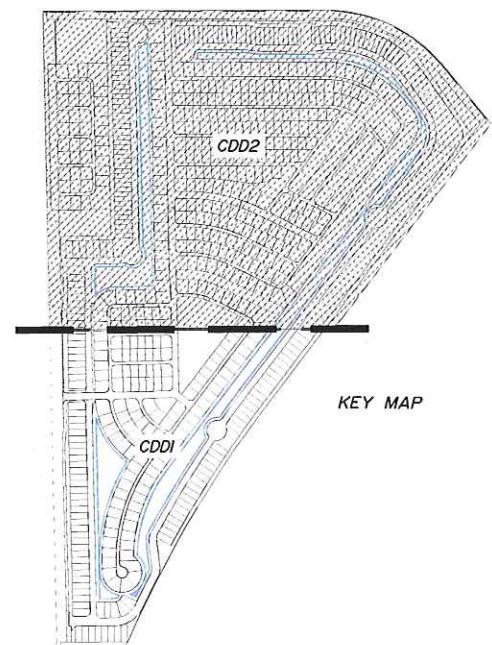
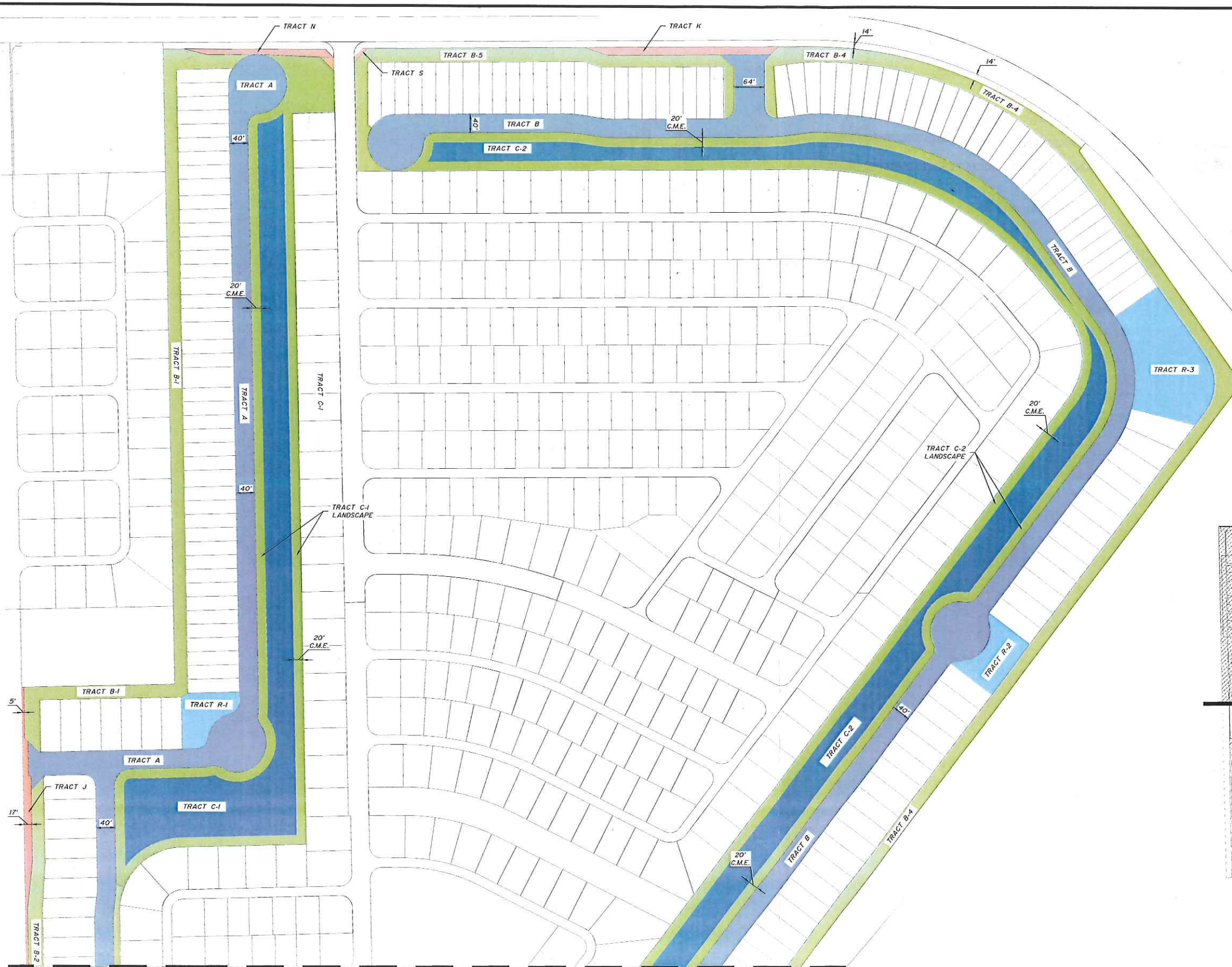
CDD MAINTENANCE
 PLAN
 SABAL PALM SOUTH
 SABAL PALMS CDD

Project Number:
201526
 Sheet Number:
2



LEGEND:

- TRACT A B B
- TRACT B-1 THROUGH B-5, B-II, B-12 & B-14
- TRACT C-1 B C-2 CANAL
- TRACT C-1 B C-2 LANDSCAPE
- TRACT R-1, R-2 & R-3
- TRACT I, J, K, M, N, P, Q, S,



MATCHLINE REFER TO CDD(I)

NO.	DATE	BY	REVISION	NO.	DATE	BY	REVISION

Designed by: N.G.T. Date: 02/2019
 Drawn by: N.G.T. Date: 02/2019
 Checked by: C.J.B. Date: _____

BALLBÉ & ASSOCIATES
 Civil Engineering • Planning • Surveying

2737 Northeast 30th Place
 Fort Lauderdale, Florida 33306
 Phone: (954) 491-7811
 Authorization No. EB-26343

Engineer of Record: CARLOS J. BALLBÉ
 Registered Engineer Number: _____ Date: 03/22/2019
 State of Florida: 4181

CDD MAINTENANCE
 PLAN
 SABAL PALM SOUTH
 SABAL PALMS CDD

Project Number:
201526
 Sheet Number:
3