

THE TRAILS

SABAL PALMS CDD

CITY OF TAMARAC, BROWARD COUNTY, FLORIDA

LEGEND

	TYPE "C" INLET
	M.H.
	90' - 15" R.C.P.
	1%
	F.F. = 12.00
	CONCRETE SIDEWALK
	EXISTING UTILITIES OR UTILITIES BY OTHERS
	PROPOSED CONCRETE
	PROPOSED ASPHALT PAVEMENT
	POLLUTION RETARDANT BAFFLE
	BLUE REFLECTOR
	UTILITY EASEMENT
	D.W.E.
	EXISTING GATE VALVE AND FIRE HYDRANT
	DOUBLE WATER SERVICE
	SINGLE WATER SERVICE
	FIRE HYDRANT AND GATE VALVE
	BACTERIOLOGICAL SAMPLING POINT
	W.M.
	G.V.
	F.H.
	R.P.Z.
	4" DIA. MANHOLE
	R.E.
	I.E.
	SINGLE SEWER SERVICE
	DIRECTION OF SANITARY SEWER FLOW
	R/W LINE
	PROPERTY LINE
	EXISTING ELEVATION
	EXISTING CONCRETE POWER POLE
	EXISTING WOOD POLE



PROJECT LOCATION

LOCATION MAP
SCALE: NTS

INDEX OF SHEETS:

DESCRIPTION:	SHEET NO.:
COVER SHEET	1
CDD MAINTANENCE	2-4

BALLBÉ & ASSOCIATES
Civil Engineering • Planning • Surveying

2737 Northeast 30th Place
Fort Lauderdale, Florida 33306
Phone: (954) 491-7811
Authorization No. EB-26343

"THE PROPOSED WORK HAS BEEN DESIGNED IN ACCORDANCE WITH ALL APPLICABLE FEDERAL, STATE, COUNTY, AND CITY OF TAMARAC CODES AND REGULATIONS HAVING JURISDICTION. IF ANY DISCREPANCIES EXIST BETWEEN THE PLANS/SPECIFICATION PREPARED BY THE DESIGNER AND THE CITY OF TAMARAC CODE AND/OR THE CITY OF TAMARAC STANDARD DETAILS, THE LATER SHALL GOVERN OR THE MOST STRINGENT."

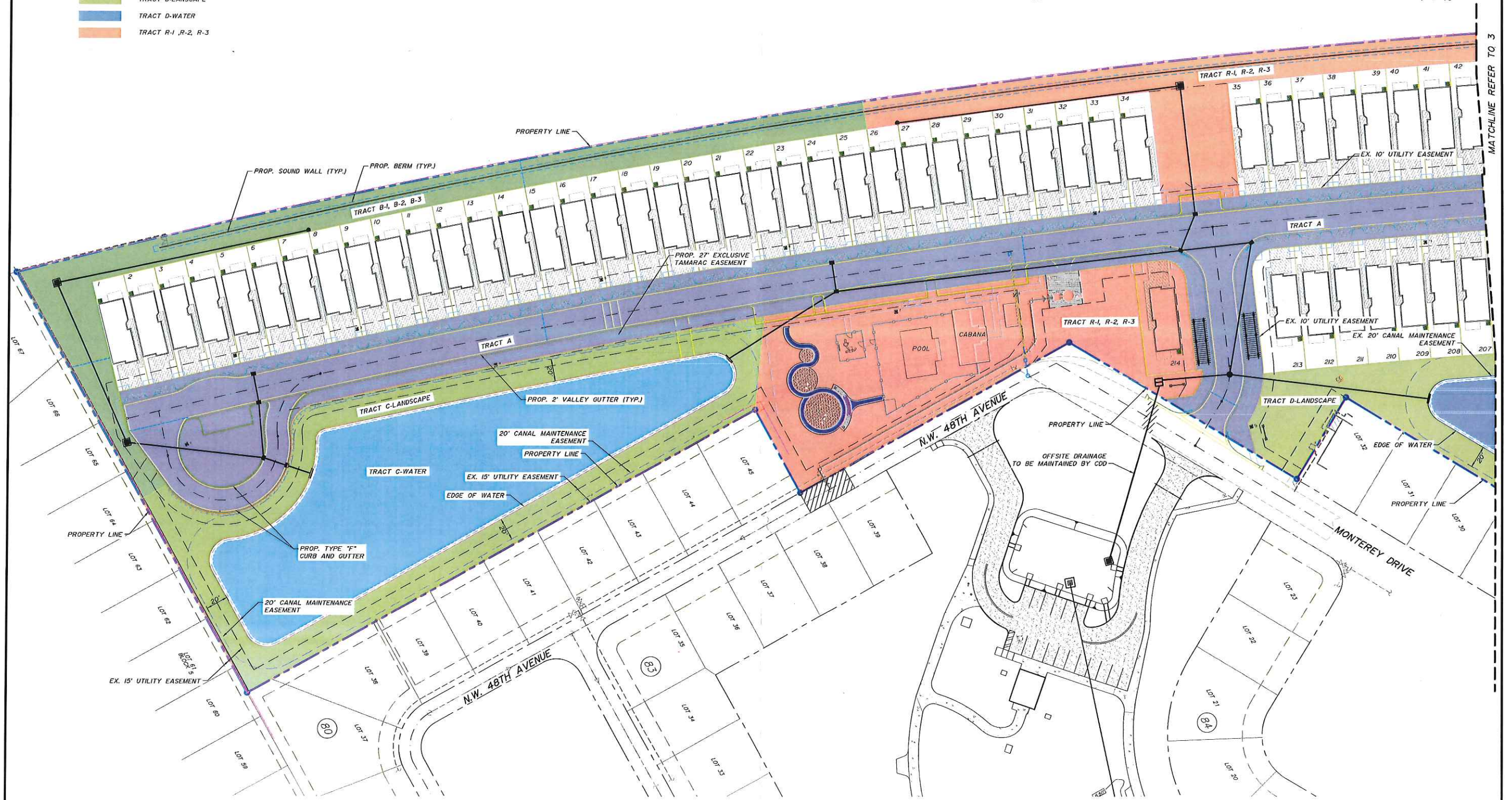
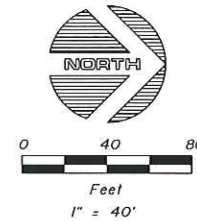
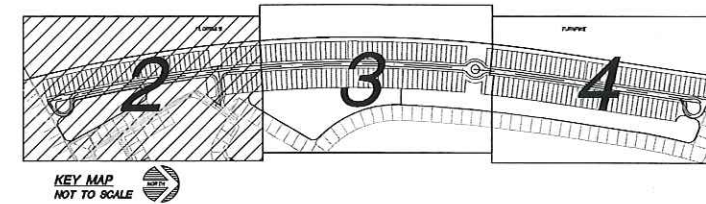
ALL ROADS WITHIN THIS DEVELOPMENT ARE PRIVATE AND MAINTAINED BY THE HOME OWNERS ASSOCIATION



CDD MAINTENANCE PLAN

Engineer of Record S/N: 95 80 DD 32 E4 4C 14 A6 37 9B	CARLOS J. BALLBÉ	Project Number: 201526
Registered Engineer Number: State of Florida	4181 Date: 03/21/2019	Sheet Number: 1

- TRACT A
- TRACT B-1, B-2, B-3
- TRACT C-LANDSCAPE
- TRACT C-WATER
- TRACT D-LANDSCAPE
- TRACT D-WATER
- TRACT R-1, R-2, R-3



NO.	DATE	BY	REVISION	NO.	DATE	BY	REVISION

Designed by: N.G.T. Date: 2/2019
 Drawn by: N.G.T. Date: 2/2019
 Checked by: C.J.B. Date: 2/2019

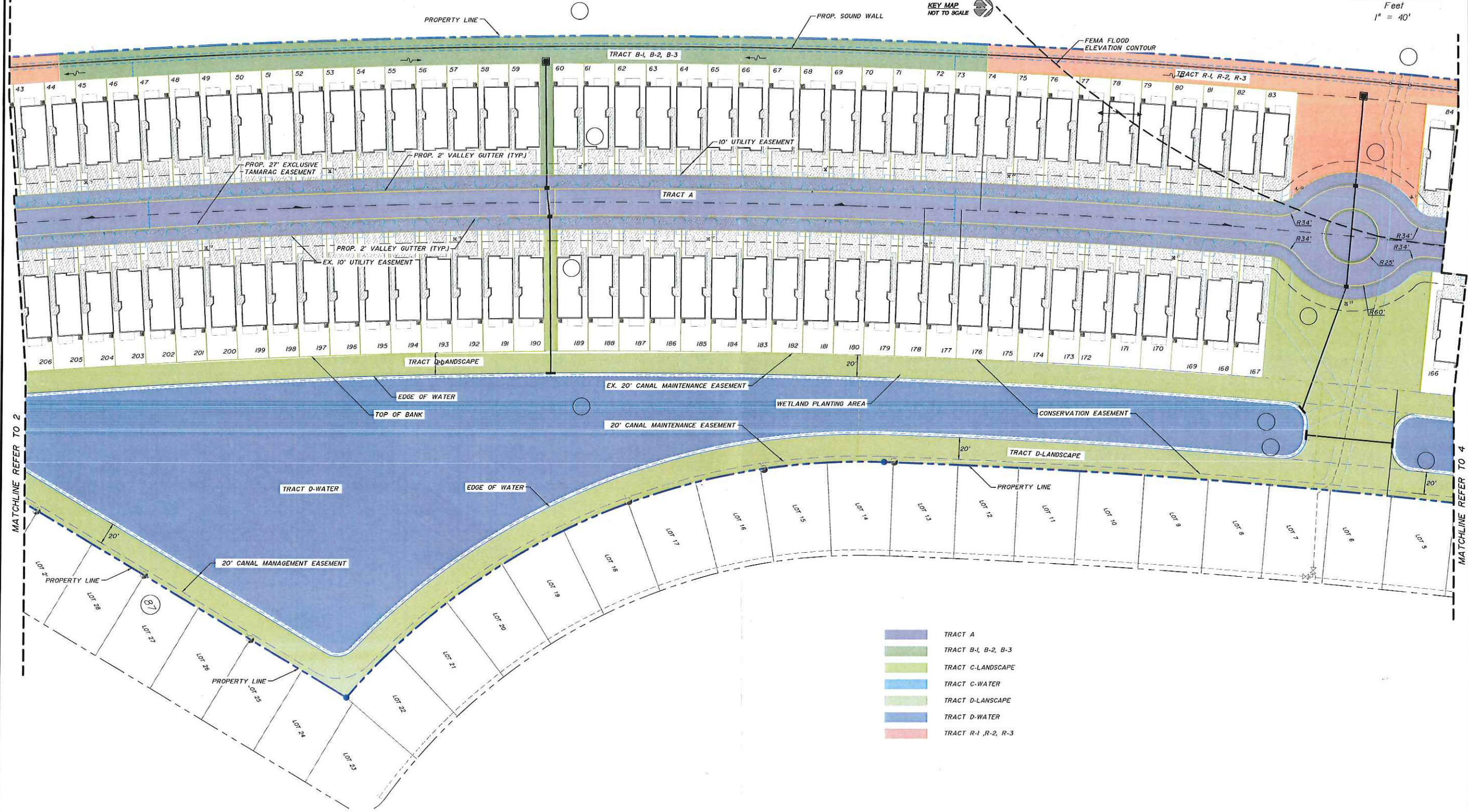
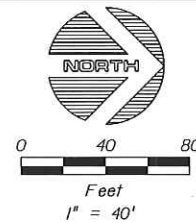
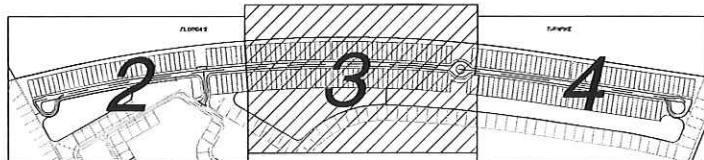
BALLBÉ & ASSOCIATES
 Civil Engineering • Planning • Surveying

2737 Northeast 30th Place
 Fort Lauderdale, Florida 33306
 Phone: (954) 491-7811
 Authorization No. EB-26343

Engineer of Record: CARLOS J. BALLBÉ
 Date: 03/20/2019
 Registered Engineer Number: 41811
 State of Florida

CDD MAINTENANCE
 PLAN
 THE TRAILS
 SABAL PALMS CDD

Project Number: 201526
 Sheet Number: 2



- TRACT A
- TRACT B-1, B-2, B-3
- TRACT C-LANDSCAPE
- TRACT C-WATER
- TRACT D-LANDSCAPE
- TRACT D-WATER
- TRACT R-1, R-2, R-3

NO.	DATE	BY	REVISION	NO.	DATE	BY	REVISION

Designed by: *N.G.T.* Date: 2/2019
 Drawn by: *N.G.T.* Date: 2/2019
 Checked by: *C.J.B.* Date: 2/2019

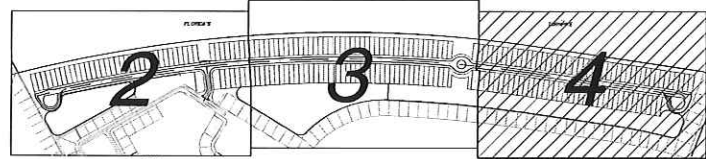
BALLBÉ & ASSOCIATES
 Civil Engineering • Planning • Surveying

2737 Northeast 30th Place
 Fort Lauderdale, Florida 33306
 Phone: (954) 491-7811
 Authorization No. EB-26343

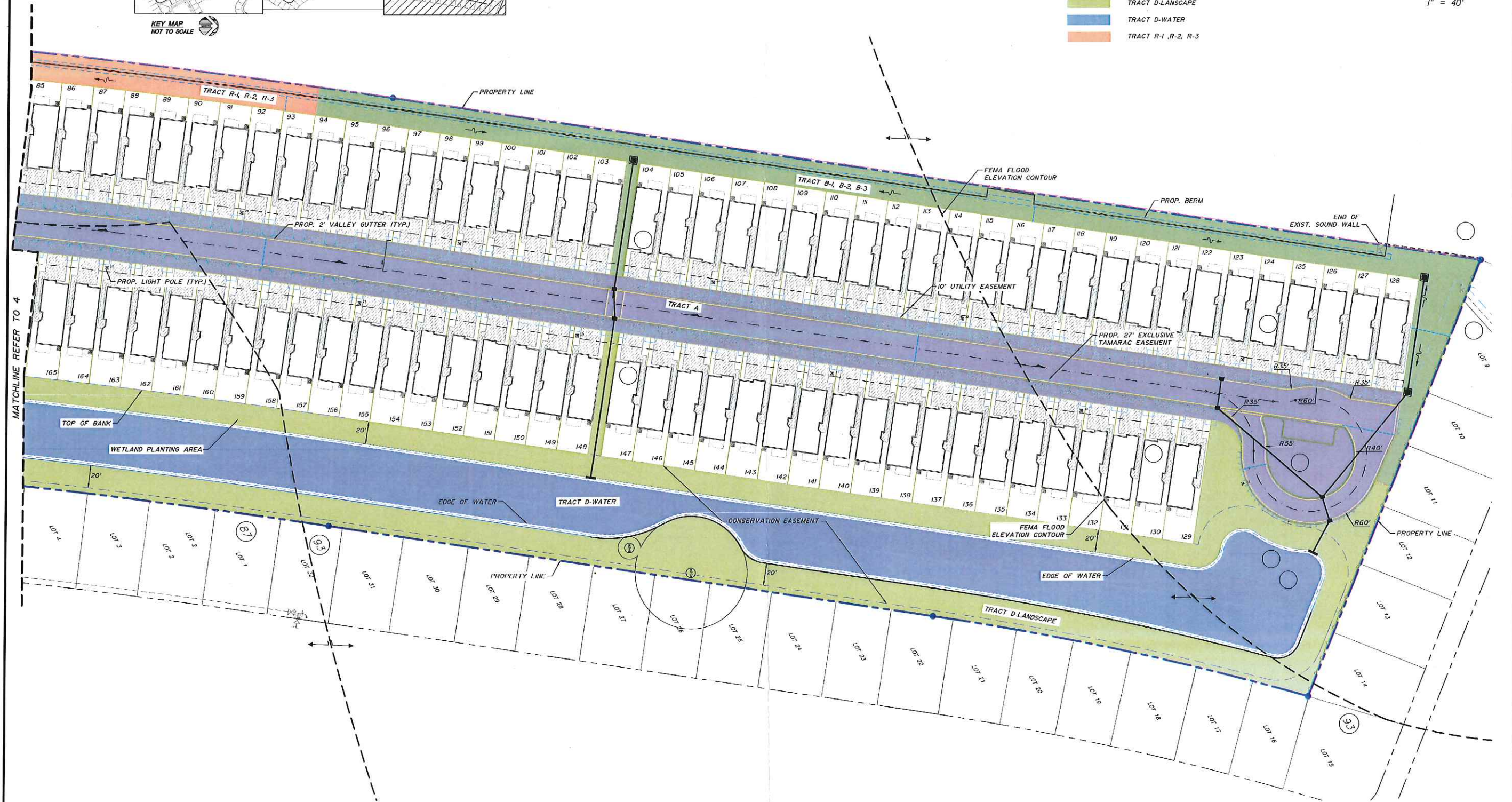
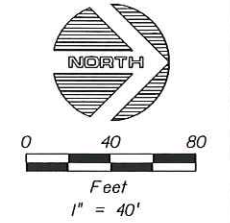
Engineer of Record: *CARLOS J. BALLBÉ*
 S/N: 95 80 00 32 E4 4C 14 A6 37 98
 Registered Engineer Number: *41811*
 State of Florida
 Date: 3/16/2019

CDD MAINTENANCE
 PLAN
 THE TRAILS
 SABAL PALMS CDD

Project Number:
201526
 Sheet Number:
3



- TRACT A
- TRACT B-1, B-2, B-3
- TRACT C-LANDSCAPE
- TRACT C-WATER
- TRACT D-LANDSCAPE
- TRACT D-WATER
- TRACT R-1, R-2, R-3



MATCHLINE REFER TO 4

NO.	DATE	BY	REVISION	NO.	DATE	BY	REVISION

Designed by: *M.G.T.* Date: 2/2019
 Drawn by: *M.G.T.* Date: 2/2019
 Checked by: *C.J.B.* Date: 2/2019

BALLBÉ & ASSOCIATES
 Civil Engineering • Planning • Surveying

2737 Northeast 30th Place
 Fort Lauderdale, Florida 33306
 Phone: (954) 491-7811
 Authorization No. EB-26343

Engineer of Record: **CARLOS J. BALLBÉ**
 S/N: 95 80 DD 32 E4 4C 14 A6 37 98
 Registered Engineer Number: 41811
 State of Florida
 Date: 03/21/2019

CDD MAINTENANCE PLAN
THE TRAILS
 SABAL PALMS CDD

Project Number: 201526
 Sheet Number: 4